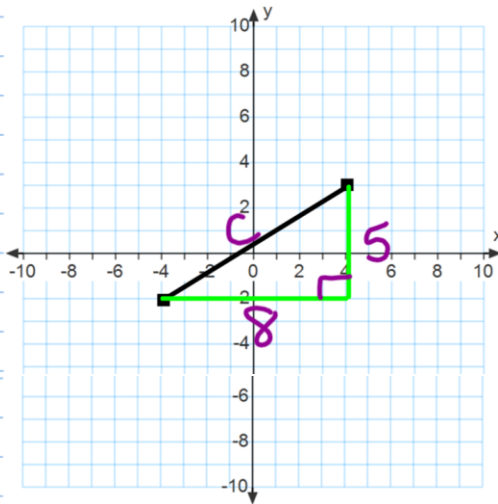


Distance on the Coordinate Plane (Using Pythagorean Theorem)

- 1) Graph and connect the given points
- 2) Draw a right triangle
- 3) Determine the lengths of the legs
(count the squares)
- 4) Use the Pythagorean Theorem to find the missing length



ALWAYS show ALL work!

$$a^2 + b^2 = c^2$$

$$8^2 + 5^2 = c^2$$

$$64 + 25 = c^2$$

$$89 = c^2$$

$$\sqrt{89} = c$$

$$9.4 = c$$

$$\sqrt{89}$$

$$\begin{array}{cc} \sqrt{81} & \sqrt{100} \\ \downarrow & \downarrow \end{array}$$

$$9$$

$$10$$

$$9 \frac{8}{19} = 9.42$$